

M2M, Location, and Environmental Tracking
AIR CARGO



sales@onasset.com
OnAsset Intelligence
3080 Story Rd. W
Irving, TX
P: 972-659-1619

OnAsset Intelligence: “M2M” Service Provider

OnAsset is an M2M* manufacturer and system designer of GPS, sensor-based **tracking devices and applications** that serve transportation providers, shippers of high value cargo, and consumers who move important valuables through the global supply chain.

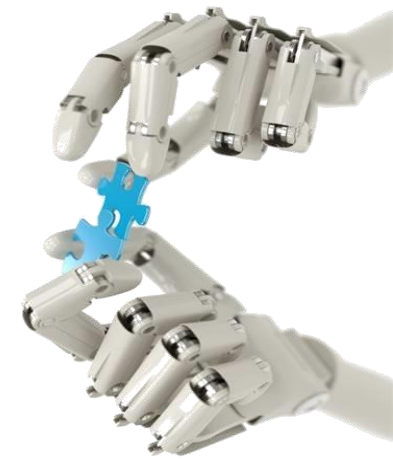
Machine-to-Machine Communications is the automated data transmission of electronic devices over a wireless network, where communication takes place without human intervention. The term was coined by Nokia in 2002, now also often called:

- ▶ “Internet of Things” / “Connected World” / “Smarter Planet (IBM)”

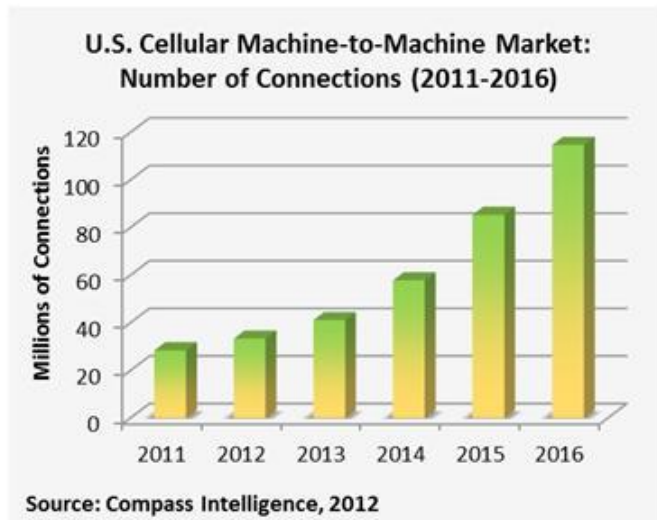
MACHINE-TO-MACHINE

M2M Predictions are Strong

- 33.3 Million total M2M connections in the U.S. in 2012
- Growth is forecasted at 114.7 million connections by 2016



36% Growth by 2016



- ▶ The largest B2B vertical market is the transportation vertical, with over 40% market share.
- ▶ Growth will come from areas where there is a demonstrable ROI, cloud computing and hosted applications will drive M2M adoption.

ROI Benefits of Real-Time Information

- ▶ Improved Operations
- ▶ Reduced Risk & Exposure
- ▶ Call Volume Reduction
- ▶ Service Differentiation
- ▶ Proactive Response
- ▶ Compliance Validation
- ▶ Accountability
- ▶ Improved Workflow Management
- ▶ Scalability
- ▶ Confidence to Carry New Cargo

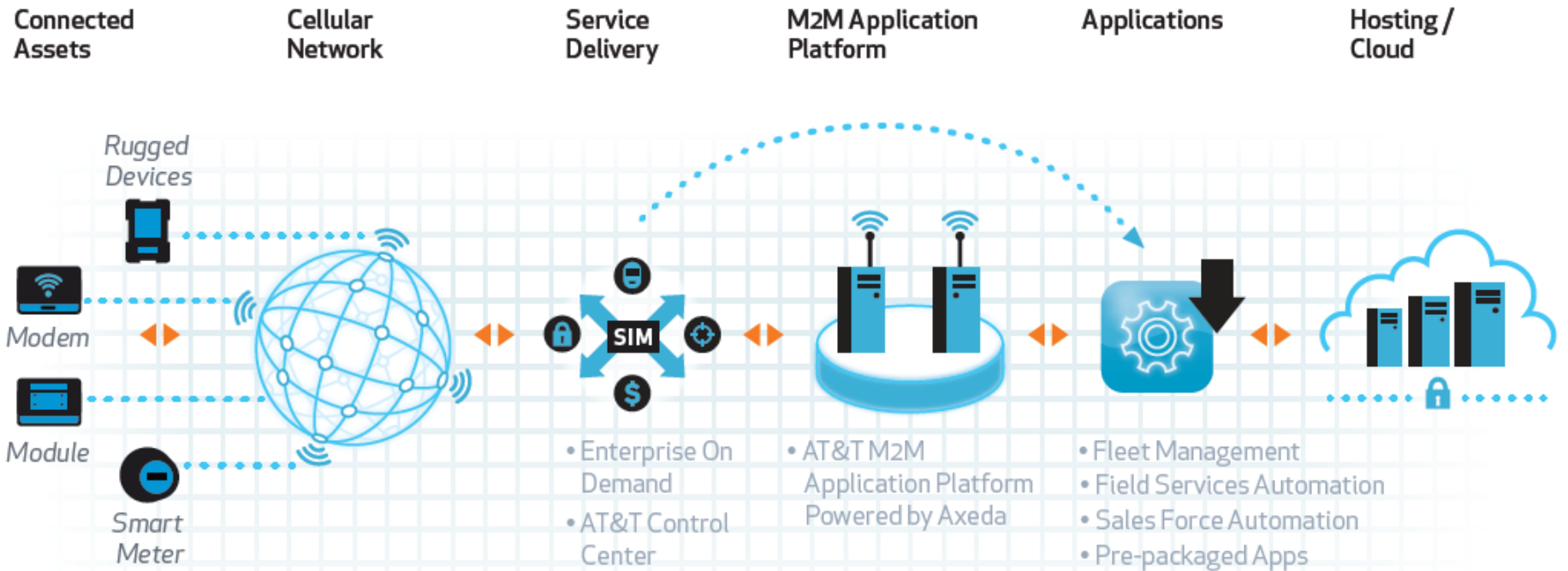


All Major Wireless Carriers are M2M Focused



AT&T Machine to Machine

Increase productivity through the deployment of fully integrated mobile solutions.



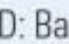


In OTHER WORDS.....

- ▶ No costly reader infrastructure
- ▶ Very few visibility gaps
- ▶ No time delays or human effort involved in data collection
- ▶ No read rate issues
- ▶ **Track Now vs. Later**
 - *Very low market entry and start up costs*

RFID vs. M2M in Medical Facilities – Helpful Tips

GUIDELINE FOR CHOOSING ASSET TRACKING TECHNOLOGY

Visibility Frequency	Environment	Asset Value				
		\$300	\$3,000	\$10,000	\$20,000	\$150,000
Daily	Patient Room	Bar codes	UHF RFID	UHF RFID	UHF RFID	UHF RFID
Weekly	ICU	Bar codes	UHF RFID	UHF RFID	UHF RFID	UHF RFID
Weekly	Recovery	Bar codes	UHF RFID	UHF RFID	UHF RFID	UHF RFID
Weekly	Bio-Medical	Bar codes	UHF RFID	UHF RFID	UHF RFID	UHF RFID
Monthly	ER	Bar codes	UHF RFID	UHF RFID	UHF RFID	UHF RFID
In/Out	Central Supply	Bar codes	UHF RFID	UHF RFID	UHF RFID	UHF RFID
In/Out	Warehouse	Bar codes	UHF RFID	UHF RFID	UHF RFID	UHF RFID

LEGEND: Bar codes =  UHF RFID =  RTLS = 

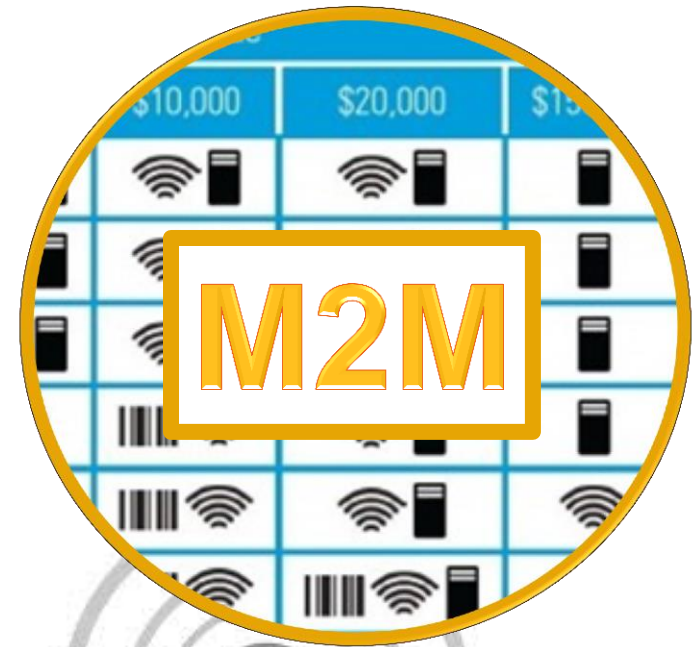
M2M

Source: Intelligent Hospital Today: <http://intelligenthospitaltoday.com/rfid-tracking-vs-barcode-scanning-how-to-determine-which-is-essential-for-your-healthcare-environment/>

RFID vs. M2M in Air Cargo

- ▶ Asset Value = HIGH
- ▶ Replacement Costs = HIGH
- ▶ Supply Chain Disruption = HIGH
- ▶ Supply Chain Process = COMPLEX
- ▶ Deployment Footprint = GLOBAL

High Value, Fast & Frequent = M2M



M2M Partners

Delivering data fast to achieve faster response time.

Raising Asset Tracking to New Heights

- ▶ Vision Platform powered by AT&T Cloud
- ▶ Exclusive partnership for low-cost international data services
- ▶ AT&T Financing services for high volume device deployment
- ▶ Next Generation FlightSafe



Joining Forces to Propel Data Forward, Fast

- ▶ Integrating FlightSafe with RKN e1 and RAP e2 Active Containers
- ▶ Telemetry data management and reporting services
- ▶ Proactive response procedures, maintenance awareness, and improved return



Key Drivers of M2M Technology

BUSINESS DRIVERS



SENSOR DATA

- ▶ Compliance Management
 - ▶ Claims Costs
 - ▶ Chain of Custody
 - ▶ Cargo Security
 - ▶ Service Differentiation
- ▶ Temperature & Humidity
 - ▶ Verification & Trending
 - ▶ Location
 - ▶ Light Detection
 - ▶ All of the above

SENTRY FlightSafe Tracking Device

- ▶ GSM / GPRS Global Communications
- ▶ Long battery life range: 4 to 7 days
- ▶ Active Sensor Suite
 - Temperature
 - Humidity
 - Intrusion Detection (Light / Dark)
 - Shock
 - Vibration
 - Motion
 - GPS & AGPS Location
- ▶ Adaptive to all types of cargo
 - Oil & Gas
 - Machine Parts
 - High Value
 - Precious Metals & Documents
 - Pharmaceutical and Life Sciences
 - Perishables



Environmental	• Operating: - 20°C to 60°C • Charging: 0°C to 34°C • Storage: - 40°C to 85°C
Dimensions	Standard Battery • 3.75 in Wide x 1.06 in High x 5.13 in Length • 10 oz Extended Battery • 3.75 in Wide x 1.88 in High x 5.13 in Length • 1 lb 6 oz

Approved by Operators Across the Globe

SENTRY FlightSafe® Network



OnAsset Contact Information

▶ Airline Approval Process Manager

- Paul Rodwell
- Based in the U.K.
- +44 7917 649325
- prodwell@onasset.com

▶ VP of Business Development & Approval Program Development

- Nikki Cuban
- Based in the U.S.
- ncuban@onasset.com
- 972-659-1619 x 138

ONASSET

INTELLIGENCE