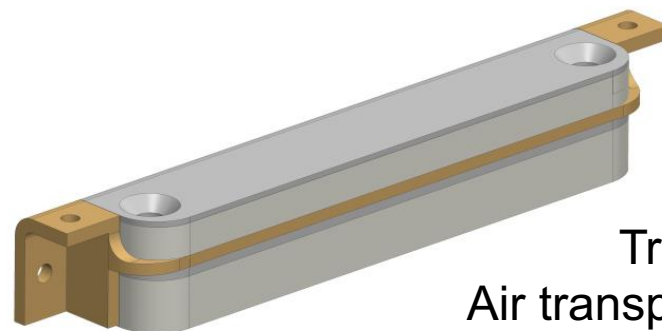



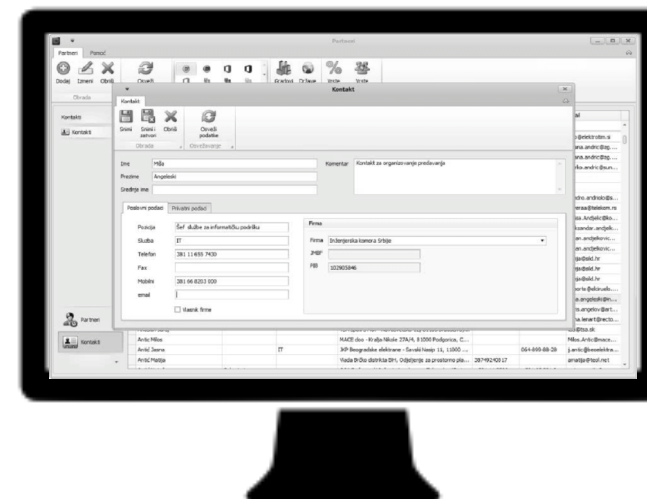


Beon

**ASSET TRACKING
FOR AIR TRANSPORT LOGISTICS**



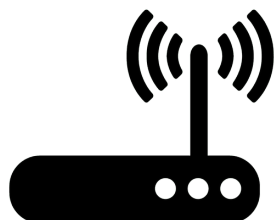
Tracker 
Air transport compliant



Back office fleet management



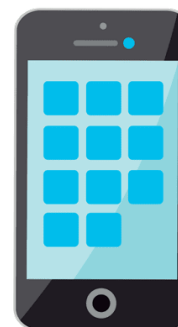
Global positioning web application



LoRa and Sigfox Beacon
local network access

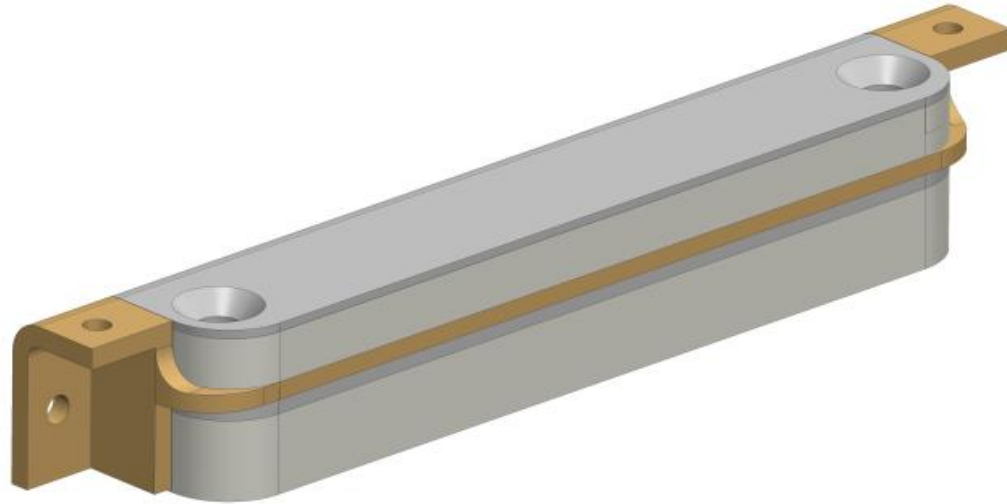


Blockchain data
management



Mobile application

Device features



Compliant with air transport regulations



**GPS for outdoor positioning
BLE for local positioning**



**Temperature sensor
Shock sensor**

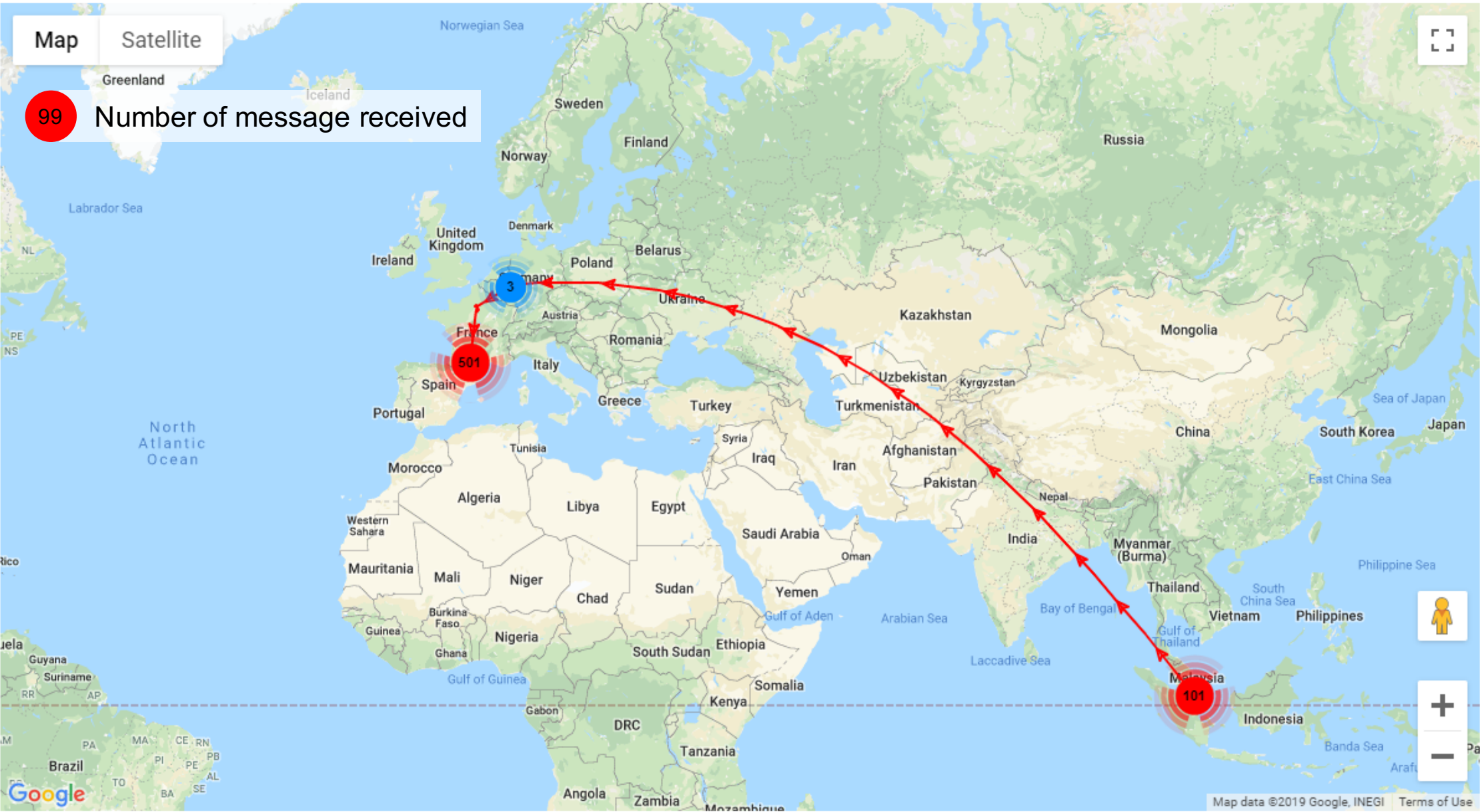


3 years battery life



**Notifications based on your rules
Access from your current IT system**

Asset Tracking from Singapore to Paris area

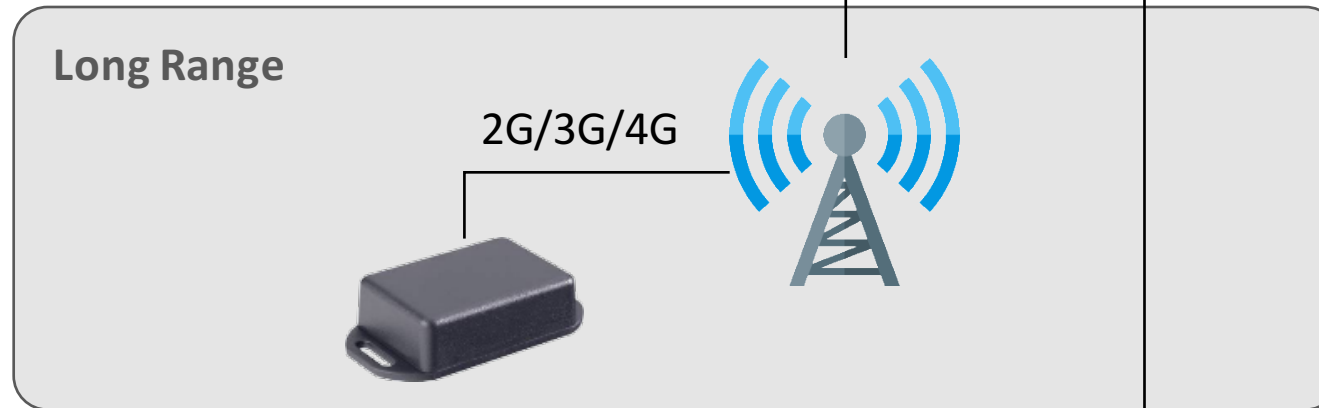
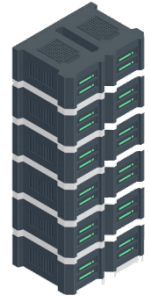


A large commercial airplane is shown on a tarmac. The cargo door is open, and a loading crane is positioned to load large metal cages onto the aircraft. The cages are stacked and appear to be made of metal mesh. The aircraft's tail section and engine are visible in the background. The text "N807FT" is visible on the tail.

TECHNOLOGIES: HOW TO CONNECT THINGS?

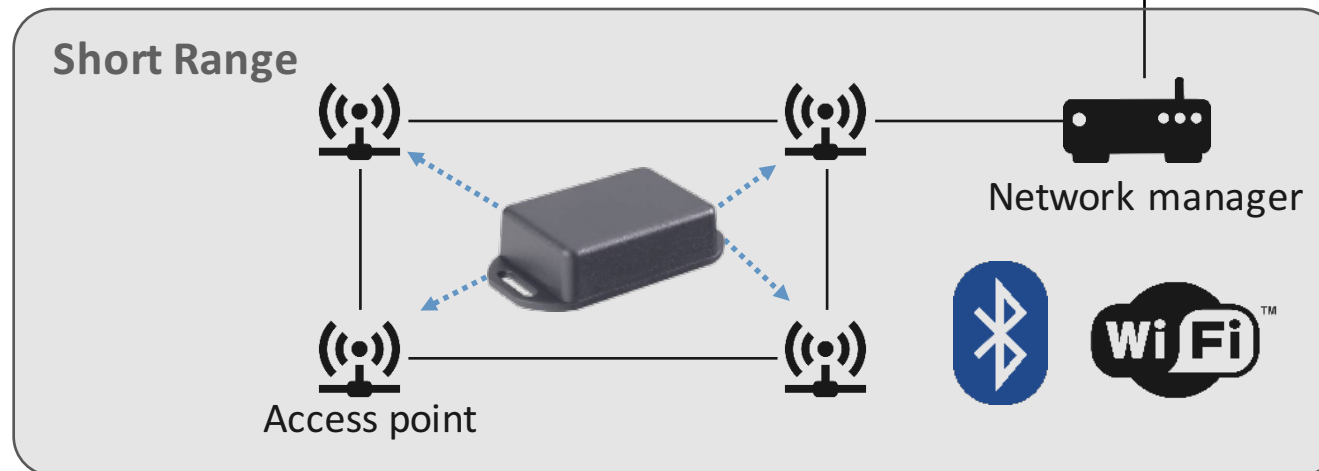
BeOn

Legacy technologies



Long Range

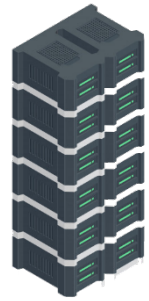
- Few weeks of battery life
- Public network available worldwide



Short Range

- Very long battery life (up to 5 years)
- Private network on each site

LPWAN – Low Power Wide Area Network



Pros

- Long range communication on public network
- Long battery life (up to 3 years using GPS)
- Low power technology for air transport acceptance

Cons

Some sites might not be covered by network, but access points are available on demand

Next step: in flight connectivity by Safran



Aircraft Equipments

Performance monitoring
Structure health monitoring
Predictive maintenance

Connected Cabin

Safety equipment inventory
Catering tracking
Configuration check

Passengers & Crew

Internet connectivity
Enhanced IFE
Comfort & health

Cargo

Weight & balance ULD
Cold chain for pharma
Live animals monitoring





**Thanks for
your attention**

Pierre-Jean Tiné
Co-founder, Director
pierre-jean.tine@beon-iot.com

Beon
beon-iot.com